



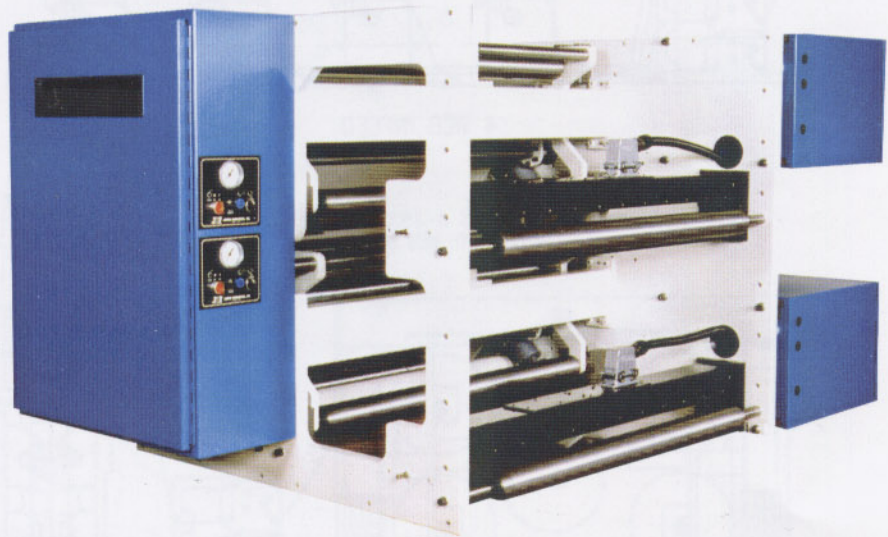
Jardis
Industries, Inc.

Automatic

Infeed Systems

Jl-250 Infeed Systems Feature

- *Harmonic Drive Variable Speed Transmission*
- *Low Mass, Low Friction Floating Roller System*
- *Closed Loop Feedback*
- *Pneumatically Actuated*
- *Urethane Nip Roller*
- *Rigidly Crossbraced*
- *Steel Frames*
- *Optional Built-In C-All*
- *Web Guide*



Jl-250 Infeed Web Tension Systems

Eliminates Register Variation
Reduces Makeready Waste
Increases Profits

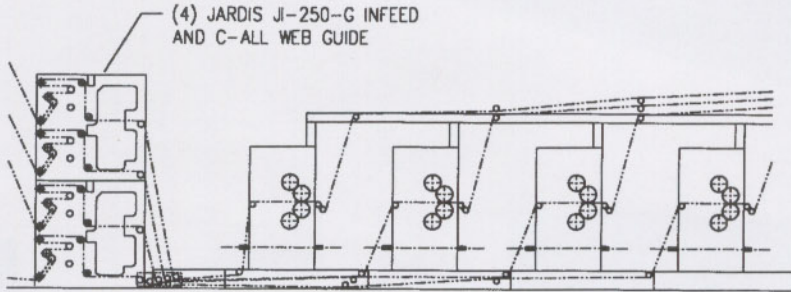
Automatic Infeed Systems by Jardis Industries provide the precise web tension required to maintain printing quality and register in modern high speed offset printing presses. A closed loop tension feedback system, employing a harmonic drive transmission and a low mass floating roller system, is used to monitor the running web tension and compensate for incoming web tension variances. A properly tensioned web eliminates register variation, slurring and doubling. The result is a better printing job with less waste!



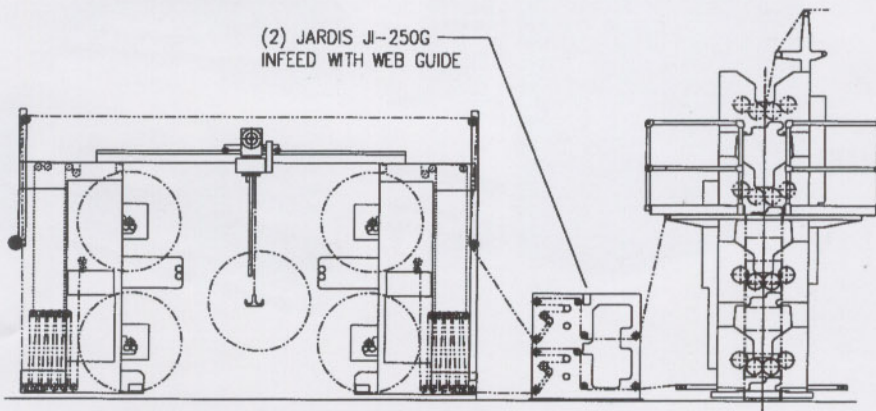
Jardis Industries, Inc.

MODEL JI-250

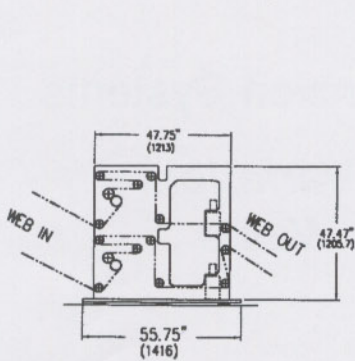
Automatic Infeed
Systems



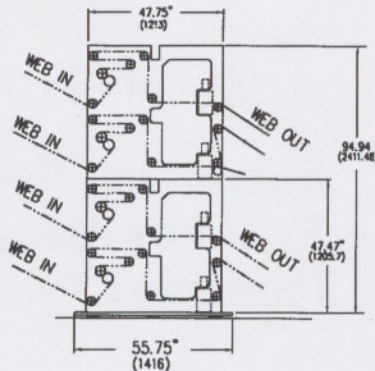
4 WEB INFEED



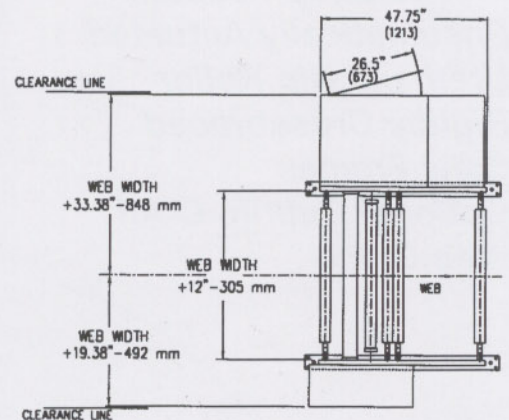
2 WEB INFEED



2 WEB INFEED
WITH WEB GUIDE



4 WEB INFEED
WITH WEB GUIDE



TOP VIEW

SPECIFICATIONS

TENSION
RANGE

5 TO 250 LBS. TWT
2KP TO 125KP

TENSION
ACCURACY

± 1% OF SET TENSION

MAX. OPERATING SPEED

1500 FT/MIN.
7.62 M/SEC.

ELECTRICAL
REQUIREMENTS

120V/60 HZ/15 AMPS

AIR SUPPLY

50 PSI MIN.
3.3 BAR MIN.

WEB WIDTHS

20" TO 40"
50 CM TO 1 METRE

Jardis Industries, Inc.

1201 Ardmore ■ Itasca, IL 60143
630-860-5959 ■ Fax 630-860-6515