

Jardis
Industries, Inc.

Automatic

Infeed Systems

Constant Tension



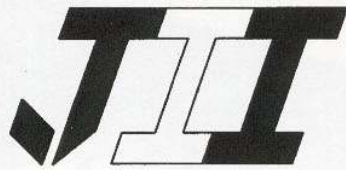
JI-150 Infeed Systems Feature

- *Harmonic Drive Variable Speed Transmission*
- *Low Mass, Low Friction Floating Roller System*
- *Closed Loop Feedback*
- *Pneumatically Actuated Urethane Nip Roller*
- *Rigidly Crossbraced Steel Frames*
- *Optional Built-In C-All Web Guide*

JI-150 Infeed Web Tension Systems

Eliminates Register Variation
Reduces Makeready Waste
Increases Profits

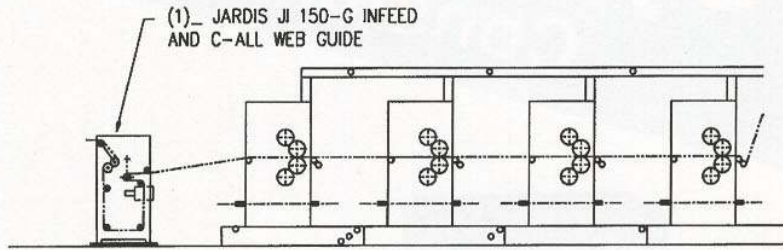
Automatic Infeed Systems by Jardis Industries provide the precise web tension required to maintain printing quality and register in modern high speed offset printing presses. A closed loop tension feedback system, employing a harmonic drive transmission and a low mass floating roller system, is used to monitor the running web tension and compensate for incoming web tension variances. A properly tensioned web eliminates register variation, slurring and doubling. The result is a better printing job with less waste!



JARDIS INDUSTRIES, INC.

MODEL JI150

AUTOMATIC INFEED SYSTEM



1 WEB INFEED

SPECIFICATIONS

TENSION RANGE

5 TO 150 LBS TWT
2KP TO 75KP

TENSION ACCURACY

± 1% OF SET TENSION

MAX. OPERATING SPEED

1100 FT/MIN.
5.59 M/SEC.

ELECTRICAL REQUIREMENTS

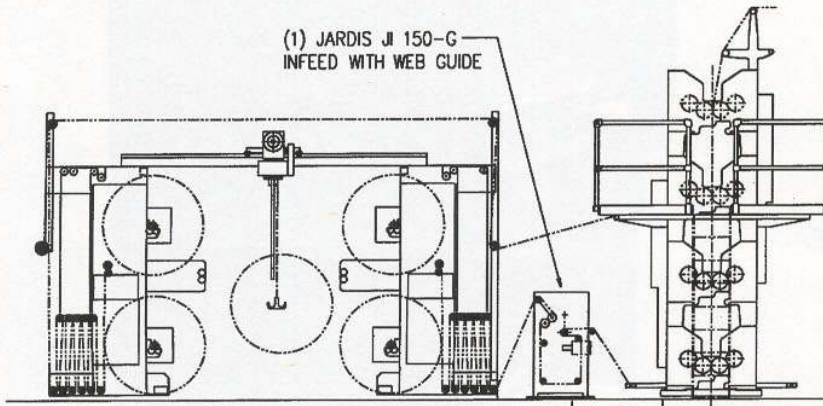
120V/60 HZ/15 AMPS

AIR SUPPLY

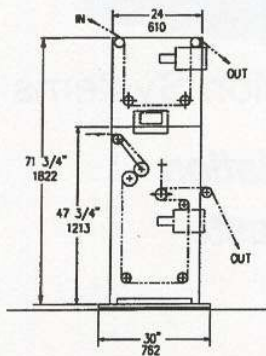
90 PSI MIN.
6.2 BAR MIN.

WEB WIDTHS

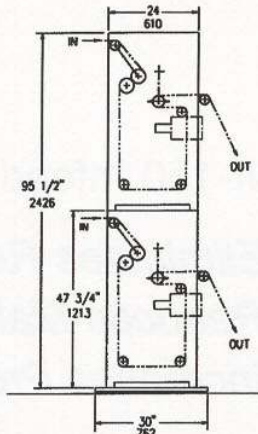
20" TO 40"
50 CM TO 1 METRE



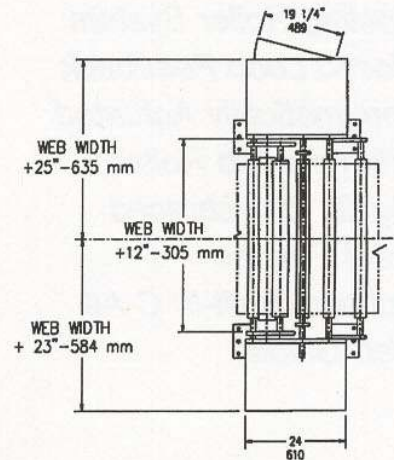
1 WEB INFEED



1 WEB INFEED WITH (2) WEB GUIDES



2 WEB INFEEDS WITH WEB GUIDE



TOP VIEW

Jardis Industries, Inc.

1201 Ardmore Itasca, IL 60143

630-860-5959 Fax 630-860-6515